



BEAT

ARCHITECTS



BEAT

ARCHITECTS

29 (Little) Musgrave St
North Rockhampton Qld 4701
Ph: (07) 4922 0000
Fax: (07) 4922 0022

www.beatarchitects.com.au



BEAT
ARCHITECTS
BROWN EVANS + TROPICAL



BEAT

ARCHITECTS

29 (Little) Musgrave St
North Rockhampton Qld 4701
Ph: (07) 4922 0000
Fax: (07) 4922 0022

www.beatarchitects.com.au



BROWN EVANS + TROPICAL

BEAT

ARCHITECTS



WELCOME

BEAT ARCHITECTS / BROWN EVANS + TROPICAL

BEAT Architects are a long established practice based in Gladstone and Rockhampton, committed to the provision of reliable, competitive and professional, Architectural Services. The firm has extensive experience with all types of building development and can offer a wealth of prompt and efficient services in-house, including:

- Architecture
- Feasibility studies
- Master Planning
- Concept, design and design development
- Contract documentation
- Tender administration
- Construction supervision
- High end 3D graphic modelling and artwork
- Interior design
- Landscape design
- Environmentally sustainable design
- Project management

We have been involved in a diversity of projects ranging from small residential renovations to the design and construction of large tourist resort complexes, offices, aged care, retail, educational, commercial, and industrial developments.

BEAT Architects is committed to providing our Clients with a team dedicated to supplying a service which results in the completion of a quality project on time and within budget.

Our dedicated staff offers a wealth of knowledge and experience on projects throughout Australia with particular emphasis on projects in Queensland. Their understanding of the unique design characteristics and constraints of building in the sub-tropics, and the implications on Client's budgets is second to none. Coupled with this understanding is the staffs' knowledge of local conditions, builders, resources and capabilities which are not always appreciated by non-local practices.

The fully equipped office is 3D CAD proficient, and employs the services of 7 Architectural personnel and 3 office staff. No project or commitment is undertaken that cannot be completed in reasonable time frame.

The success of the practice is evidenced by the honouring of the firm with awards for residential and environmental projects by the Australian Institute of Architects and the HIA.

www.beatarchitects.com.au



BEAT ARCHITECTS

BROWN EVANS + TROPICAL



BEAT ARCHITECTS / BROWN EVANS + TROPICAL

Established 1997

Incorporated in Queensland
ACN 074 133 510 ABN 41 074 133 510

Registered Architectural Company
In the State of Queensland.

REGISTERED OFFICE

29 Little Musgrave Street
North Rockhampton Qld 4700
Telephone: 07 4922 0000
Facsimile: 07 4922 0022
17 Flinders Parade, Gladstone

ACCOUNTANT

Benson Accountants
160 High Street
North Rockhampton Qld 4701
Telephone: 07 4928 3929
Facsimile: 07 4928 4167

PROFESSIONAL INDEMNITY

Dual Limited Australia Pty Ltd
Policy Name: Carl Brown Architects Pty Ltd
Policy No.: P-PI/0/50192/13/E-5
Policy Value: \$10,000,000.00

PUBLIC LIABILITY INSURANCE

Vero Insurance Limited
Policy Name: Carl Brown Architects Pty Ltd
Policy No.: SMX013010417
Policy Value: \$20,000,000.00

QUALITY ASSURANCE

Certificate No.: FS 520340
Expires: 17 February 2017

PRE-QUALIFICATION

Registration No.: 1250A
PQC Rating: Level 3
Issue Date: 07 March 2014

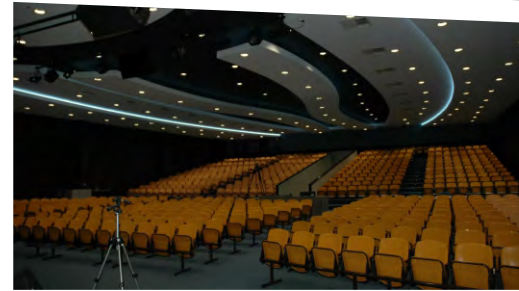
WORKCOVER

Policy No.: WGA000102396
Expires: 30 June 2015



BEAT

ARCHITECTS



CHURCH / SCHOOL AUDITORIUM & CHURCH REFURBISHMENT (2012-2013)

Client: Cathedral of Praise, North Rockhampton

Budget: \$1.5 Million

Description: A dramatic two-storey Church Office addition to an existing 30 year old Church building, combined with an extensive internal renovation of the lobby and ceiling of the Church / School auditorium and sanctuary space. Inspired by the vision and mission statements of the Owners, the new ceiling and lobby staircase provided creative design opportunities for the architects to enhance the spatial experience and religious atmosphere of the internal spaces.

Project Architect: Mike Evans (BEAT Architects)

Structural Engineer: Brown Consulting

Electrical/Mechanical Engineer: Anderson Consulting

Hydraulics Engineer: MRP Hydraulics & Fire Services

Referee: Ps Claude Fingleton CEO College Board (ph: 4936 1441)



BEAT

ARCHITECTS



KINDERGARTEN (2014)

Client: Emerald Christian College, Emerald

Budget: \$1.5 Million

Description: A single-storey brick veneer and metal clad 259sq.m two space new kindergarten, with associated playground, landscaped gardens and car park. The modern and spacious Kindergarten is designed to enclose a range of flexible learning and indoor and outdoor shaded play spaces, incorporating amenities, a kitchen, a laundry, as well as office spaces, while providing excellent supervision and security throughout the facility. The playground space is designed to provide an exciting variety of formal and informal learning, play, and social environments.

Project Architect: Mike Evans (BEAT Architects)

Structural Engineer: Brown Consulting

Electrical/Mechanical Engineer: Anderson Consulting

Hydraulics Engineer: MRP Hydraulics & Fire Services

Referee: Jon Kirk Business Manager (ph: 4982 0977)



Photo: ECC Kindergarten 3D Concept





LIBRARY, MUSIC BLOCK & COVERED GAMES AREA (2010)

Client: Emerald Christian College, Emerald

Budget: \$1.8 Million

Description: A single-storey brick veneer and metal clad 259sq.m new library, 255sq.m music teaching block, and a 225sq.m steel framed multi-functional covered games area on a flat site within an established school campus. The modern and attractive library comprises resource, reading, and study spaces, a flexible seminar room, IT media research corner, and a staff workroom and amenities. The covered games structure is designed to shelter a variety of formal and informal learning, play, and social environments.

Project Architect: Mike Evans (BEAT Architects)

Structural Engineer: Brown Consulting

Electrical/Mechanical Engineer: Anderson Consulting

Hydraulics Engineer: MRP Hydraulics & Fire Services

Referee: Jon Kirk Business Manager (ph: 4982 0977)



MIDDLE SCHOOL CLASSROOM BLOCK (2009)

Client: Emerald Christian College, Emerald

Budget: \$1.1 Million

Description: A single-storey brick veneer and metal clad 332sq.m GLA classroom, science lab, home economics and staff office building for the newly created Middle School precinct within the school campus. Each teaching space was individually designed to maximize the range of formal and informal teaching opportunities, and external seating elements were added to the verandahs to provide opportunities for external learning as well as social spaces for the students to gather.

Project Architect: Mike Evans (BEAT Architects)

Structural Engineer: Brown Consulting

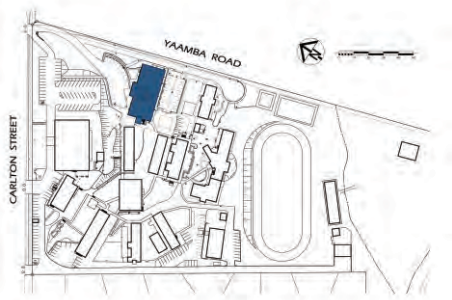
Electrical/Mechanical Engineer: Anderson Consulting

Hydraulics Engineer: MRP Hydraulics & Fire Services

Referee: Jon Kirk Business Manager (ph: 4982 0977)



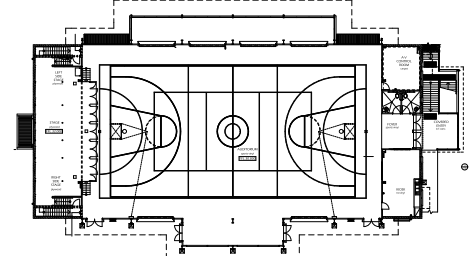
BEAT
ARCHITECTS



MASTER PLAN 1:2500



LOWER LEVEL FLOOR PLAN 1:200



Upper Level Floor Plan

MULTI-PURPOSE SPORTS HALL & MUSIC CENTRE (2009)

Client: Heights College, North Rockhampton

Budget: \$4.2 Million

Description: A dramatic, two-level, curved roofed, rendered masonry and steel framed sports hall situated on a sloping site on the periphery of a school campus. The 1,600sq.m facility comprises a modern multi-sports school auditorium, stage, canteen, amenities and control room on its first floor, with air-conditioned and acoustically treated music and drama classrooms, performing arts teaching and learning spaces, instrumental studios, dressing rooms, and change facilities on its lower floor.

Project Architect: Mike Evans (BEAT Architects)

Structural Engineer: Brown Consulting

Electrical/Mechanical Engineer: Anderson Consulting

Hydraulics Engineer: MRP Hydraulics & Fire Services

Referee: Ps Claude Fingleton CEO College Board (ph: 4936 1411)



LOWER PRIMARY CLASSROOM BLOCK (2008)

Client: Heights College, North Rockhampton

Budget: \$2.2 Million

Description: A two-level, face block and rendered masonry 8 GLA space classroom building inserted as an infill development on a sloping site in the centre of the school campus. The 648sq.m building introduced flexible learning spaces to the campus via a system of multi-track sliding doors to the air-conditioned classrooms that opened to the covered art spaces and protected courtyards. All classrooms that opened to the covered art spaces and protected courtyard. All classrooms were fitted with extensive IT, electronic whiteboard and digital projectors to provide an enhanced teaching environment. Outdoor teaching elements were installed to the generous covered verandahs, which were carefully orientated to the prevailing breezes and views across the rest of the school campus.

Project Architect: Mike Evans (BEAT Architects)

Structural Engineer: Brown Consulting

Electrical/Mechanical Engineer: Anderson Consulting

Hydraulics Engineer: MRP Hydraulics & Fire Services

Referee: Ben Head Business Manager Heights College (ph: 4936 1076)

Photo: Heights College, Lower Primary Classroom Block 3D Concept





BEAT

ARCHITECTS



LIBRARY, ART ROOMS & SCIENCE WING (2005, 2010, & 2012)

Client: Heights College, North Rockhampton

Budget: \$3.9 Million

Description: A multi-stage two-level, masonry and composite panel clad multi-disciplinary school building, located to overlook the school oval, and become the school campus's feature building highly visible from the highway. The building incorporates a resource centre, mixed-size teaching spaces for individual study or collaborative learning, art rooms, IT labs, and science laboratories. The project was staged and extended over several years, and it was important to maintain the material palette and integral symmetry and harmony of the initial design, both from the highway elevations and from the internal connections from the rest of the campus higher on the slopes.

Project Architect: Mike Evans (BEAT Architects)

Structural Engineer: Brown Consulting

Electrical/Mechanical Engineer: Anderson Consulting

Hydraulics Engineer: MRP Hydraulics & Fire Services

Referee: Ben Head Business Manager Heights College (ph: 4936 1076)

www.beatarchitects.com.au



BEAT

ARCHITECTS



LIBRARY (2009)

Client: Faith Baptist Christian School, Burua

Budget: \$1.5 Million

Description: A single-storey, steel portal framed 278sq.m new library building for an existing school campus on a rocky, sloping site. The high curved roof encloses an open plan flexible layout comprising resource and reading spaces, teaching spaces, a tutorial room, staff workroom and amenities.

Project Architect: Carl Brown (BEAT Architects)

Structural Engineer: Engineers Queensland

Electrical/Mechanical Engineer: Cushway Blackford & Associates

Hydraulics Engineer: Engineers Queensland

Referee: Chris McPhail Principal (ph: 4978 2850)



BEAT

ARCHITECTS



MULTI-PURPOSE SPORTS HALL (2010)

Client: Redeemer Lutheran College, Biloela

Budget: \$2.5 Million

Description: A dramatic, steel framed, 990sq.m covered multi-purpose sports hall, located on a gently sloping site partially over existing tennis courts, on the edge of an existing primary school campus. The facility comprises an auditorium, stage, amenities and change rooms, a kiosk and store rooms.

Project Architect: Carl Brown (BEAT Architects)

Structural Engineer: VDM Consulting

Electrical/Mechanical Engineer: Cushway Blackford & Associates

Hydraulics Engineer: Waterwise Design

Referee: Jenni Krenske Principal (ph: 4992 1813)



MIDDLE SCHOOL PRECINCT (2013)

Client: Redeemer Lutheran College, Biloela

Budget: \$2.5 Million

Description: The first stage of Middle School precinct for the school campus comprising 2 GLA Classrooms, Home Economics, Amenities, and a Manual Arts facility incorporating woodwork, metalwork, and technical teaching spaces.

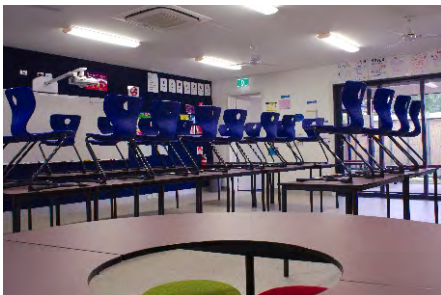
Project Architect: Carl Brown (BEAT Architects)

Structural Engineer: Brown Consulting

Electrical/Mechanical Engineer: Cushway Blackford & Associates

Hydraulics Engineer: Cushway Blackford & Associates

Referee: Jenni Krenske Principal (ph: 4992 1813)



BEAT ARCHITECTS

BROWN EVANS + TROPICAL



TESTIMONIAL REDEEMER LUTHERAN COLLEGE, BILOELA

Brown Evans & Associates Architects (BEAT Architects)

Redeemer Lutheran College, Biloela is located in Central Queensland in the rural and mining community of Biloela. Our College is one of 86 schools and colleges in the Lutheran Education Australia system. Established by the Redeemer Lutheran Congregation in 1978 it has been operating for 37 years offering an option of quality education. In 2014 our expansion into secondary began with the Middle School campus and program opening with Year 7 and 8 and will grow each year afterwards adding Year 9 in 2015 and Year 10 in 2016.

BEAT Architects have been an integral part in this expansion. Our professional relationship began in 2009 when we approached the company to assist us with planning and project management for our Multipurpose Building funded under the Building Education Revolution (BER) Federal Government funding. The timeframes involved in all aspects of this project were short. Mr Carl Brown and Gerard Cullinane worked tirelessly with us to understand our design requirements, finalise plans and documentation, engage a suitable contractor and oversee the project within the short deadlines. The result was an outstanding Sporting and Arts facility. A close professional relationship was formed during this project.

We did not hesitate to engage BEAT for our ensuing projects. Stage One of Our Middle School Campus which included a Manual Arts facility, a Multipurpose Home Economics and Art room, classrooms and an ablutions block was completed in 2013. The second stage of this campus is currently under construction and includes classrooms, a staffroom and a Science Laboratory. Mr Carl Brown, Mr Mike Evans and Mr Joon Jung have all contributed to this two stage project. Mr Jung having managed Stage One is currently overseeing the current stage of construction. Mr Jung is knowledgeable, efficient and effective communication skills. Nothing is ever too much trouble.

A third stage of our facilities upgrade is currently being planned. As with our Middle School Campus BEAT Architects representatives have attended our Block Grant Authority (BGA) funding application review meetings. This professional support has contributed to our College gaining very successful funding allocations.

Master planning was an integral part of our facilities upgrade and expansion. The team have been patient in consultation process and provided us with a clear future vision.

The team approach used by this company is evident with everyone from the reliable administration staff to the architects themselves knowing us and our projects. For us a personal relationship with our service providers is important and we have received this. Support is always just a phone call away.

In summary BEAT Architects have provided us with professional, reliable service in the design, documentation and construction of our three major capital works projects. As a team the architects, and support staff, are extremely approachable and efficient. They have demonstrated that they know schools, how they operate, their needs and budgetary constraints. Through collegial collaboration they have assisted us to bring to life our initial ideas and added to the final design with their design and product knowledge so that we have both functional and attractive school facilities for 21st Century teaching and learning. I recommend this company and their service.

In His Service,

A handwritten signature in black ink that reads "J K Krenske". The signature is fluid and cursive, with the first letters of the first and last names being capitalized.

Jenni Krenske, Principal. Redeemer Lutheran College, Biloela

BEAT ARCHITECTS

BROWN EVANS + TROPICAL



TESTIMONIAL HEIGHTS COLLEGE, ROCKHAMPTON

Brown Evans & Associates Architects (BEAT Architects)

Heights College has had a close working relationship with BEAT Architects since 1988, and have personally worked with BEAT Architects on projects at the College since 2006.

I have worked closely with both Mr Carl Brown and Mr Mike Evans and have found their professionalism and work ethic as being second to none. Both Gentlemen are very approachable, have always listened extremely well to our needs, whilst at the same time have brought their own expertise and ideas to the table with design and implementation. Both Carl and Mike are always willing to come onto our site at short notice to give advice and review ideas.

BEAT Architects have been involved with assisting both the Cathedral Of Praise Church (land owners at the College is situated on) and Heights College with master planning for future works, and in particular have been our project managers for various projects including:

- Construction of our Prep Centre (2007)
- Construction of our 2 Storey Lower Primary Building (2008)
- Construction of our Multipurpose Centre, Science and Language Centre and Library Extensions (2009-2011)
- Cathedral of Praise church extensions (2013)
- Presently involved in the construction of a new prep classroom

At the start of 2009, the team at BEAT Architects were able to pull together at very short notice and on an extremely skinny time frame, set by the Commonwealth Government, plans for our multipurpose Centre and Science and Language Centre which were constructed as part of the Commonwealth Government's Building Education Revolution. We have always found the team at BEAT Architects to be courteous, prompt with their responses to our queries and above all else, extremely reliable and professional in all of their dealings with us.

We have a wonderful long standing relationship with BEAT Architects that we intend to continue long into the future and as a result, we have no hesitation in recommending them to any prospective client of theirs.

Yours sincerely,

Ben Head
Business Manager



BEAT

ARCHITECTS



BEAT
ARCHITECTS

BROWN EVANS + TROPICAL



LIST OF ALL PREVIOUS EDUCATIONAL WORK

HEIGHTS COLLEGE, ROCKHAMPTON

Site Plan & Masterplanning of Campus (1988 -)
2 GLA Classroom Blocks (1998)
Administration Block Renovation (2001)
Covered Area (2002)
Library (2003), Science Wing Addition (2009), and Library Extension (2010)
Early Learning Centre & Playground (2005)
Manual Arts Shed (2006)
8 GLA Classroom Block (2007)
Multi-Purpose Centre (2010)
Hospitality Trade Training Centre – unbuilt (2013)
Extensions to Early Learning Centre (2014)

EMERALD CHRISTIAN COLLEGE, EMERALD

Site Plan and Masterplanning of Campus (1999 -)
Classroom Block, Preschool, Covered Area, Amenities & Carpark (2000)
Administration Block (2005)
Middle School Classroom, Science & Home Economics Block (2007)
Library, Covered Area & Music Block (2010)
Middle School Classroom & IT Block (2012)
Kindergarten (2014)

BILOELA REDEEMER LUTHERAN COLLEGE, BILOELA

Site Plan & Masterplanning (2009 -)
Multi-Purpose Sports Hall (2010)
Middle School GLA & Home Ec Block (2013)
Middle School GLA & Science Block & Lower Primary Extensions (2014)



BEAT

ARCHITECTS



BEAT
ARCHITECTS

BROWN EVANS + TROPICAL



LIST OF ALL PREVIOUS EDUCATIONAL WORK

FAITH BAPTIST CHRISTIAN SCHOOL, BURUA (CALLIOPE)

Site Plan & Masterplanning (1999 -)

3 GLA Classroom, Administration, Covered Area & Amenities Block (2000)

Preschool (2003)

Library (2009)

Art Room & Shade Structure (2014)

CENTRAL QUEENSLAND CHRISTIAN COLLEGE, ROCKHAMPTON

Masterplanning (2006 -)

School Entry (2009)

Science & Technical Studies Refurbishment (2009)

Covered Games Area & Stage (2010)

ST STEPHENS LUTHERAN COLLEGE, GLADSTONE

Preschool (2006)

Masterplan (2007)

TRINITY COLLEGE, GLADSTONE

Masterplan (2004)

Classroom Block – unbuilt (2006)

Library & Manual Arts Facility (2010)

Dept of Education Projects

Cannonvale State School – Masterplan & 2 GLA Classrooms (1999)

Clinton State School – Masterplan & New Music Block (1998)

Eimeo Road State School – Preschool Unit & Carpark Upgrade (2000)

Frenchville State School – Masterplan, Multi-Purpose Hall, Administration Block & Carpark (2005)

Mirani State School – New Amenities Block (2000)

Marian State School – GLA Block Extension (2000)

www.beatarchitects.com.au



BEAT
ARCHITECTS



BEAT
ARCHITECTS
BROWN EVANS + TROPICAL



LIST OF ALL PREVIOUS EDUCATIONAL WORK

KINDERGARTENS

Rainbow Valley Kindergarten Extension (2014)

Emerald Christian College Kindergarten (2014)

EXAMPLES OF NON-EDUCATIONAL WORK

AGED CARE

Shalom Retirement Units, Rockhampton (1998 – 2004)

Shalom Hostel & Aged Care Facility, Rockhampton (2006)

Glen Eden Gardens Aged Care Facility, Gladstone (2007)

GOVERNMENT ADMINISTRATION

Yeppoon Town Hall (2012)



BEAT
ARCHITECTS

GP SUPERCLINIC



BEAT
ARCHITECTS

BROWN EVANS + TROPICAL



REFEREES

Company

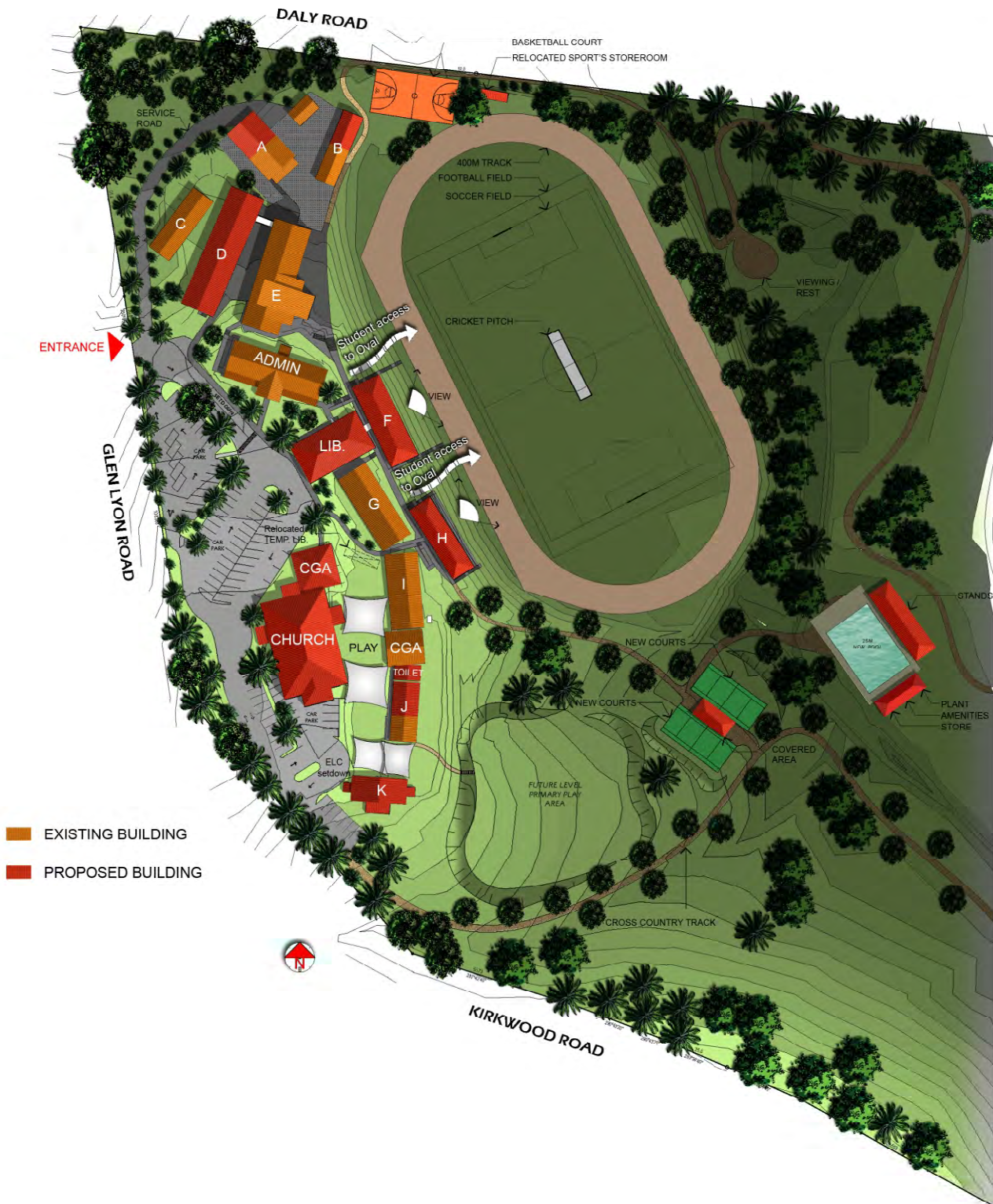
Heights College
Emerald Christian College
Cathedral of Praise
QR National / Aurizon
Redeemer Lutheran College
Strathpine GP Super Clinic
Gladstone GP Super Clinic
Rockhampton Regional Council

Personnel

Mr. Ben Head
Mr. Jon Kirk
Ps. Claude Fingleton
Mr. Kevin West
Mrs. Jenni Krenske
Dr. Evan Jones
Dr. John Bird
Mr. Andrew Collins

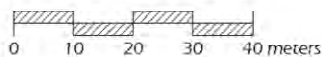
Ph: 07 4936 1076
Ph: 07 4982 0977
Ph: 07 4936 1411
Ph: 07 4932 0345
Ph: 07 4992 1813
Ph: 0428 715 166
Ph: 0412 656 725
Ph: 0448 368 365

www.beatarchitects.com.au



2 STREAM - KINDY TO YR12

MASTER PLAN



Property Description

Lot 60 on RP 906248
Site Area = 161,870 m²
06-238 DEC 2008

www.beataarchitects.com.au

GENERAL

Admin Block

- Administration
- Conference Room
- Sick Bay
- Archives Room
- Staff Room

Library Block

- 2 Storey
- Library
- Withdrawal / Support rooms under

Church Block

- Church Auditorium
- 400 seats
- 200 seats exit
- stage
- Store
- W/c
- Tuck shop / Kitchen / Uniform shop
- Canteen / Covered Game Area
- Carpark 1 Under

HIGH SCHOOL PRECINCT

Block A

- 2 X Manual Arts Rooms
- Storage & courtyard

Block B

- 2 X Science Rooms
- Store
- Fume Cupboard
- Prep.

Block C

- 3 X Staff Rooms

Block D

- 2 storey
- 4 X GLA's
- Graphics Room
- Teacher Lounge
- Computer room
- 2 X Store rooms
- Link to Block E

Block E - Stone Ridge

- W/C's
- Home Eco. Rooms
- Computer Rooms
- Art Rooms
- Gym room
- Link to Block D

PRIMARY SCHOOL PRECINCT

Block F

- 2 Storey
- 8 GLA's
- Tiered Seating view to oval under

Block G

- 2 X GLA's
- Toilet

Block H

- 2 Storey
- 6 GLA's
- Tiered Seating view to oval under

PLAYGROUND

- Primary Play Area
- Covered Games Area

EARLY LEARNING PRECINCT

Block I

- Teacher's room
- 2 X GLA's

Covered Game Area

Block J

- 2 X GLA's
- Prep.
- Toilet Block

Block K

- 2 X Kindy GLA's

PLAYGROUND

- Shaded Play ground
- Play Equipment
- Kindy Playground
- Sandpit

SPORT FACILITIES

- 25m Pool with Stands
- 2 X courts
- Basketball court
- Cross Country Track
- 400m Track
- Cricket Pitch
- Football field / Soccer Field

29 (little) Musgrave Street
North Rockhampton, Qld 4701
Phone: 07 4922 0000
Fax: 07 4922 0022

17 Binders Parade
Gladstone, Qld 4680
Phone: 07 4979 0144

ALBERT 07 4979 1633

admin@brown.evans.com.au
www.brownevans.com.au





SITE PLAN 1:500



GROUND FLOOR PLAN 1:200



FIRST FLOOR PLAN 1:200



A new extension to an existing Early Learning Centre, consisting of classrooms, toilets, staff area and storage rooms. Further project requirements were an additional carpark, outdoor play and work areas and a covered link from the existing Centre. The aim was to create an exciting, friendly and sophisticated learning environment for children and staff.

The layout is compact with minimal space given to circulation. Both classrooms and stairs to staff areas are accessed from the double volume entrance foyer. The upstairs Staff kitchen and patio provide a private space for the Staff, which is linked to the rest of the Centre via the double volume Foyer.

An open sided covered courtyard link will also be used for an outdoor work area, partially enclosed by a steel sculpture. The two classrooms and studio open up to a covered outdoor space leading to dedicated outdoor play areas. The covered link and entrance foyer will further be used to exhibit the children's art work produced at the Centre.

The concept of the new extension was to create a sense of playfulness, intimacy by rotating parts of the room within the classroom spaces. These rotated boxes, which have contrasting cladding material to the rest of the building, sit halfway in and out of the building envelope and are seen as smaller "cubby houses" within a larger volume.

The exterior covered areas with irregular floating roofs and randomly inclined posts is a metaphor for a forest where children can play. The steel sculptural artwork takes this concept further by incorporating various "objects" found in a forest and attaches them to the inclined steel "tree trunks".



RAINBOW VALLEY EARLY LEARNING CENTRE GLADSTONE



BEAT
ARCHITECTS

BROWN EVANS+TROPICAL





BEAT

ARCHITECTS

29 (Little) Musgrave St
North Rockhampton Qld 4701
Ph: (07) 4922 0000
Fax: (07) 4922 0022

www.beatarchitects.com.au